

Petals and Palettes



AGC's Biennial Art and Floral Design Show

Atkinson Garden Club

presents

PETALS AND PALETTES

2024

FLOWER AND ART EXHIBIT

Flower arrangements presented by
our award winning designers who will interpret
artwork of local artists

Friday , March 22, 1pm-7pm

Saturday, March 23, 11am-4:00pm

Atkinson Resort and Country Club
85 Country Club Drive, Atkinson, N.H.

Admission \$ 10.00 Tickets at the Door (16 yrs and over)

Directions

From 93 North: To exit 3, right at end of ramp, Follow 111 East 4.5 miles. Right on Island Pond Road (traffic light at B & H Gas) Go past Stonehenge. Becomes Shannon Rd. Travel 2.6 mi, left on Clubhouse Drive. At top, go left to main ARCC building.

From 495 North or South: To exit 51B, Rte. 125 North to Rte. 121 for 2.6 miles. Left on Sawyer Ave , follow 1 mile. Road becomes Providence Hill Rd and Country Club Dr. is a left turn and main building is on the left.

History

Started in 2003 as AGC fundraiser

Inspired by BOSTON's MFA Art in Bloom

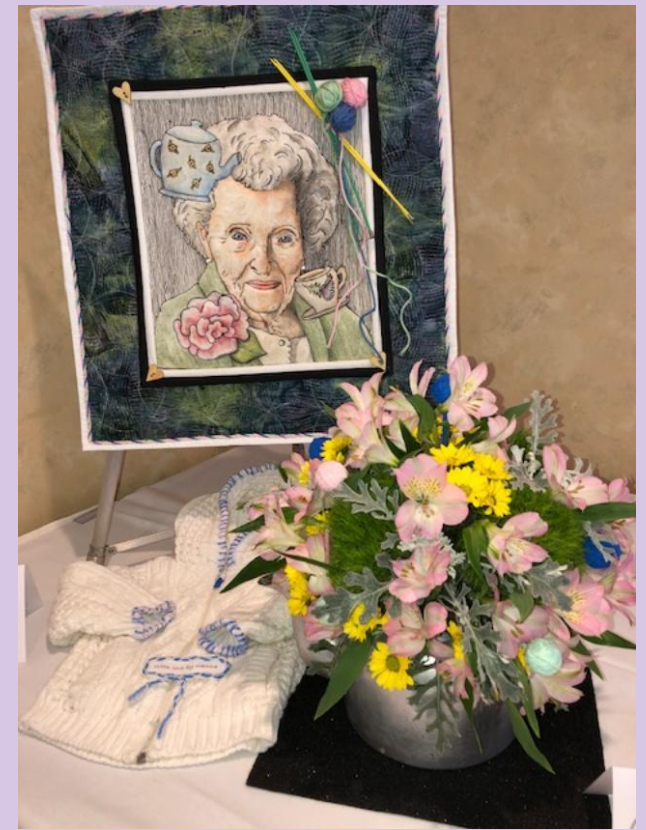
Location: Atkinson Resort and Country Club

Called for Local Artists to submit art for the show

Artwork includes paintings, sculptures, textiles, jewelry, stain glass, etc

Club members select art in February

Typically 45 – 50 pieces of art interpreted with floral designs





Floral
Jeann
Where,

WHERE ARE WE?
FUTURE CARRIAGE CENTER
KANSAS CITY
SEP 10-12
WILL BE THERE



FUN and Exciting Show

Various Art styles like painting, sculptures, textiles, etc.

No rules for the floral designs – not like Standard Flower Show!

Use your imagination

Great for beginner and experienced designers alike

Collaboration with other designers is encouraged

Non-competitive (but we do vote for best in show of the combination of art & flower design)



FUN and Exciting Show (cont)

Social gathering – lunch at club, see neighbors and friends at the show

Designers and Artists get 2 free tickets (one for you and one for friend)

Many locals look forward to this first taste of Spring!













Basic Timeline

Jan 1st week – invitation to artists

Mid – Feb AGC members select 1 or more pieces to interpret

March two weeks before show – Room layout and markups

Week of show:

Wednesday – room set-up

Thursday afternoon/evening – art and floral designs are placed

Friday morning – last minute entries

Friday afternoon – show opens at 1:00 to the public

Saturday – 5:00 show ends and all designers/artists pick up entries



Best in Show - 2019



Best in Show - 2015





Jo Carter
The Girl
Acrylics



Floral design by
Nina Gray
Pink and Green China

Jackie Cunningham
Pink and Green China
oil



One Piece of Art – Two different Floral Arrangers

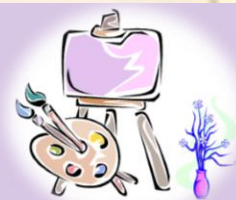
It has become a tradition for Petals and Palettes to display one piece of artwork along with two arrangements interpreted by two different club members. This display is intended to clarify the Petals and Palettes explanation on the back page of your program.

Enjoy and Reflect!





2019





2015





2013



Tapestry/Textiles



Jewelry/wearables





Unusual pieces



Premake design and add
fresh components just
before the show





Even if you are away you can make a dried arrangement for someone else to place





Art contributed
by club
members

Stained Glass by
Nina Gray design by
Marnie Finn



Bluebird Art by Ellen Witherell design by Sheri Turell



Rug by
Dee
Lippold
Design
by Leann
Moccia

Pastel by
Sue Miner
floral design
by Pat
Bennett



Gloria – artist and designer!



New Members first design!

Left: Cathy Bastek 2017

Right: Jeanne Geisser 2019

Bottom: Sheri Turell in 2011



How can you help?

An “All Hands on Deck”
Club Project

Become a committee member

Floral Designers and/or artists

Help set up and/or clean up

Hostesses and/or sell tickets



